

The Rocky Intertidal

Can you identify 5 animals that live in the rocky intertidal zone with mussels?

1. ACORN BARNACLE

2. LIMPET

3. SHORE CRAB

4. CHITON

5. GREEN SURF ANEMONE

GOOSENECK BARNACLE

OCHRE STAR

RED ROCK CRAB

LEATHER STAR

KELP CRAB

BAT STAR

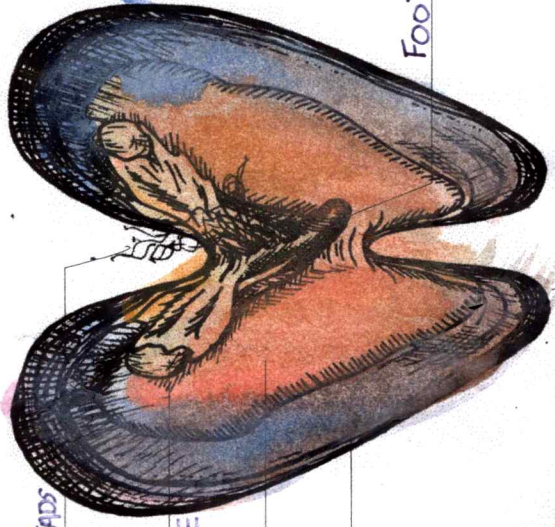
PINK-TIPPED ANEMONE

RED TURBAN SNAIL

BLACK TURBAN SNAIL

Featured Animal: Mussels

SEA CUCUMBER



BYSSAL THREADS

POSTERIOR
ADDUCTOR MUSCLE

GILL

MANTLE

SHELL

